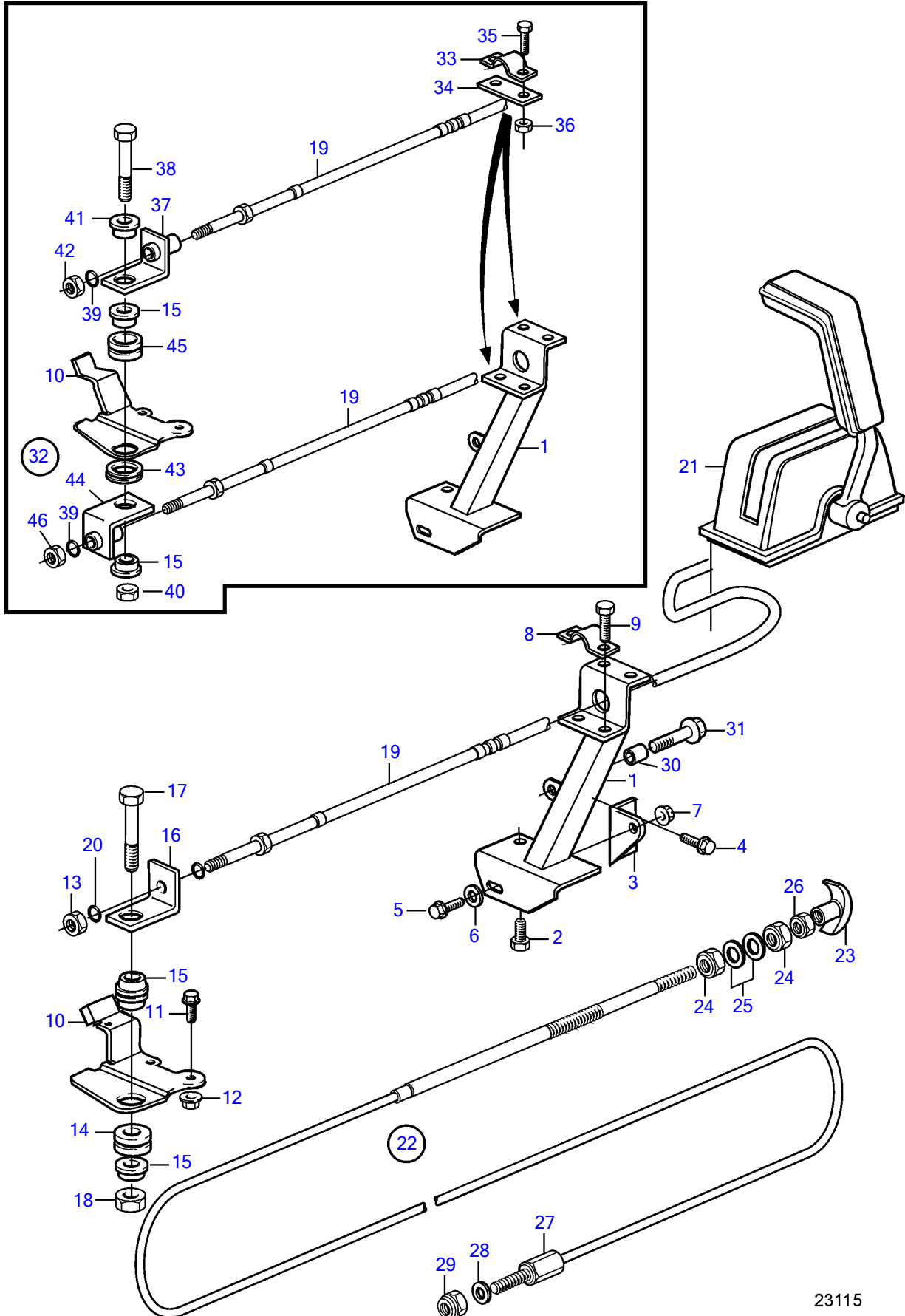


AD41L-A, AD41P-A, D41L-A, TAMD41H-A, TAMD41P-A, TAMD41L-A, TAMD41M-A, TMD41L-A



AD41L-A, AD41P-A, D41L-A, TAMD41H-A, TAMD41P-A, TAMD41L-A, TAMD41M-A, TMD41L-A

REF	PART NO.	QTY	DESCRIPTION	SEE SEC.	NOTES
1	838783	1	Bracket		
2	946471	1	Flange screw		L=16mm
	946441	1	Flange screw		L=20mm
3	838753	1	Bracket		
4	946440	2	Flange screw		
5	945444	1	Flange screw		
6	191172	1	Washer		
7	948645	1	Flange lock nut		
8	21471054	1	Bracket		
9	969407	2	6 point socket screw		(956078)
10	(858261)	1	Lever		Obsolete part
11	946544	1	Flange screw		
12	949278	1	Flange lock nut		
13	951674	1	Lock nut		
14	843109	1	Bushing		
15	843105	3	Spacer washer		
16	843107	1	Anchorage		
17	955274	1	Hexagon screw		
18	946035	1	Lock nut		
19		1	Control cable	231	
20	955971	1	O-ring		
21		1	Control		
22	(818478)	1	Push pull control		L=3,3m, Obsolete part
	(818470)	1	Push pull control		L=6,9m, Obsolete part
23	(829241)	1	• Handle		Obsolete part
24	955857	2	• Hexagon nut		
25	955950	2	• Toothed washer		
26	955844	1	• Hexagon nut		
27	829070	1	Cable lock		
28	955894	2	Washer		
29	(950363)	1	Lock nut		Obsolete part
30		1	Spacer sleeve		
31	947542	1	Flange screw		
32	3581042	1	Engine speed control		For double steering positions.
33	21471054	1	• Bracket		
34	819068	1	• Washer		
35	969407	2	• 6 point socket screw		(956078)
36	951674	2	• Lock nut		
37	861215	1	• Bracket		
38	955275	1	• Hexagon screw		
39	955971	2	• O-ring		
40	946035	1	• Lock nut		
41	843105	1	• Spacer washer		
42	951674	1	• Lock nut		
43	843105	1	• Spacer washer		
44	861214	1	• Bracket		
45	843109	1	• Bushing		
46	951674	1	• Lock nut		

7742700-27-1745

23115

Upd:2011-09-28

AD31L-A, AD31P-A, AD41L-A, AD41P-A, D41L-A, TAMD31L-A, TAMD31M-A, TAMD31P-A, TAMD31S-A, TAMD41H-A, TAMD41H-B, TAMD41P-A, TAMD41L

VOLVO
PENTA